

oakheart

£700 Per Month

Per Month

Campernell Close, Brightlingsea



This well-presented ground floor apartment is located in the coastal town of Brightlingsea. Ticking lots of boxes the area boasts many shops and amenities. You are only a short walk to the seafront and within easy access to Colchester and Clacton town centres.

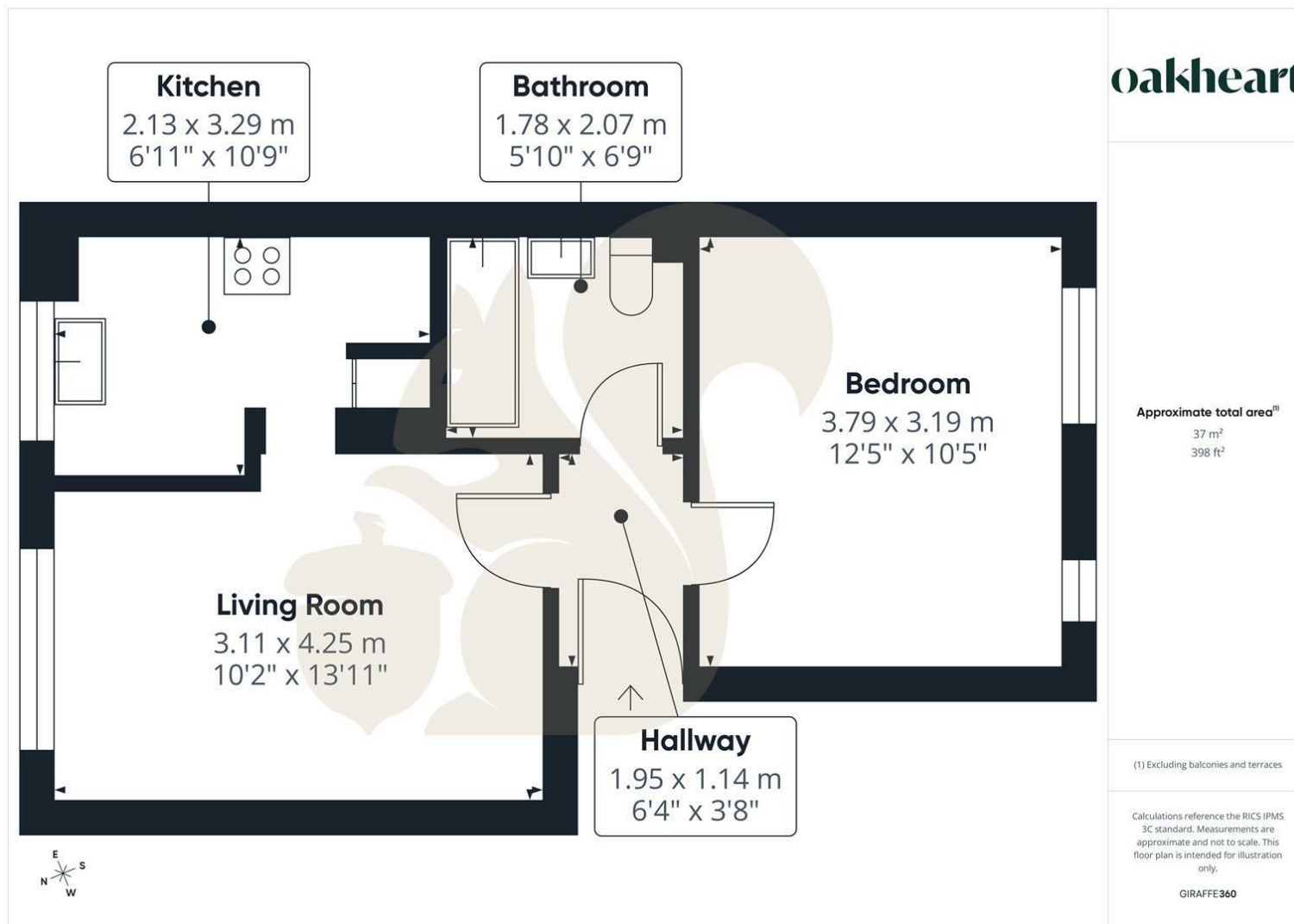
Deceptively spacious, the property features a lounge/diner, a modern kitchen, a large bedroom and a

bathroom with shower over the bath. All well presented throughout and offered unfurnished. The property also boasts an allocated parking space. Perfect as a first time home for a single person or couple. Available Now!










oakheart

Local Authority:
Colchester

Tenure:

Council Tax Band:
A

Energy Efficiency Rating

	Current	Potential
Very energy efficient - lower running costs		
(92 plus) A		
(81-91) B		
(69-80) C		78
(55-68) D	62	
(39-54) E		
(21-38) F		
(1-20) G		
Not energy efficient - higher running costs		
England & Wales	EU Directive 2002/91/EC 	

Agents Note: Whilst every care has been taken to prepare these particulars, they are for guidance purposes only. All measurements are approximate and are for general guidance purposes only and whilst every care has been taken to ensure their accuracy, they should not be relied upon.

Oakheart Colchester - Lettings
01206 803 308
colchesterlettings@oakheart.co.uk
2b Cotman Road, Colchester, Essex, CO3 4QJ

oakheart